



**ALBATROSS**  
SHIPPING AGENCIES (INDIA) PRIVATE LIMITED



# Vessel Specifications of AHTS Albatross 10

---

## Registration

Official No	5080
IMO No	9529281
Call sign	ATER2
MMSI No	419002050
Year built / builder	19 Nov 2008/Grandview Shipbuilding & Engineering Co,Ltd
Country of build	China
Flag / Port of registry	India/Mumbai Port
Class	Bureau Veritas
Type	Anchor Handling Tug Supply Vessel
Owner	Albatross Shipping Agencies (India) Private Limited

---

## Dimensions

Length Overall	58.70 m
Length Waterline	56.37 m
Length Between Perpendicular	53.20 m
Breadth Moulded	14.60 m
Depth Moulded	5.50 m Max.
Draft Moulded	4.75 m
GRT	1530 MT
NRT	459 MT
Deadweight	1475 MT

---

## Machinery

Main Engine	2 x Niigata 6MG28HX 2500 BHP
Auxiliary Engine	2 x Caterpillar 3408 Dita 315 kW
Emergency Generator	1 x 52 KW
Shaft Generator	2 x 750 kW
Bow Thruster	1 x 6 MT
Steering Gear	electro-hydraulic type with twin screw arrangement
Propulsion	2 x CPP
Rudders	2 x Conventional Rudder

---

## Deck Equipment

Windlass	1 x electro-hyd for Ø 40 mm rated 9 MT @ 12 m/ min
Anchor	2 x 1305 kg High Hold Type Bow Anchor
Anchor Chain	357.5 m x 40 mm Ø each, port & stbd
Capstan	2 x 5 MT @ 15 m/ min
Tugger Winch	2 x 10 MT @ 15 m/ min

---

## Transfer rates

Fuel Oil	1 x 150 m <sup>3</sup> / hr @ 75 m head
Fresh Water	1 x 100 m <sup>3</sup> / hr @ 75 m head
Mud Pump	2 x 70 m <sup>3</sup> / hr @ 75 m head
Drill Water Pump	1 x 100 m <sup>3</sup> / hr @ 75 m head
Bulk Cement	2 x 13 m <sup>3</sup> / min @ 80 psi

---

---

### **Cargo Capacities**

Deck Cargo	600 MT
Deck Strength	7.0 MT / m <sup>2</sup> uniform loading
Clear Deck Area	330 m <sup>2</sup>
Fuel Oil	511 m <sup>3</sup>
Fresh Water	273.51 m <sup>3</sup>
Ballast/Drill Water	358.98 m <sup>3</sup>
Freezer	20 m <sup>3</sup> (-18° C temperature)
Chiller	20 m <sup>3</sup> (+14° C temperature)
Mud	255.60 m <sup>3</sup>
Cement Tank	4 x 42.48 m <sup>3</sup> @ 80 psi

---

### **Performance**

Maximum speed	13.5 knots
Type of fuel	Marine Gas Oil

---

### **Towing / Anchor Handling / Mooring**

Bollard Pull	62.5 MT
Tow/ AH Winch	Double Drum Waterfall Type, Upper Drum – Ø 56 mm x 1000 m (Towing) Lower Drum – Ø 56 mm x 1000 m (Anchor Handling) Remote control from aft control stand in wheelhouse
Tow/ AH Pull (1st Layer)	150 MT @ 6 m/ min – Low Speed 71 MT @ 12 m/ min – Mid Speed 23 MT @ 36 m/ min – High Speed
Braking Capacity	200 MT
Stern Roller	1.6 m Ø x 5.0 m length, SWL 200 MT
Karmfork	1 x Karmoy 200 MT SWL
Tow Pins	1 set electro-hyd Karmoy, SWL 200 MT

---

### **Fire-fighting equipment and antipollution equipment**

FiFi	Fire Fighting Class 1
Fire pump	2 x 1500 m <sup>3</sup> /hr @ 13 bar
Fire monitor	2 x 1200 m <sup>3</sup> /hr @ 12 bar inlet pressure
Throw Length	120 m

---

### **Accommodation**

Berths	2 x 1 berth cabin = 2 2 x 2 berth cabin = 4 11 x 4 berth cabins = 44
Total Accommodation	50 Room with attached bathroom
Hospital	1 x 1 berth cabin

**All cabins are fully air-conditioned**

---

---

**Navigation and communication**

GMDSS	Furuno RC-1800T for Area A1 + A2 + A3
SART	2 x Jotron
Inmarsat C	2 x Felcom-15
Satellite EPIRB	1 x McMurdo
Portable VHF Radio	3 x Icom Model GM-1500
Navtex Receiver	1 x Furuno
X-Band Radar	2 x Furuno
Echo Sounder	1 x Furuno
DGPS	1 x Furuno
Gyrocompass	1 x Robertson
Autopilot	1 x Raytheon
Weather Fax	1 x Furuno
Speed Log	1 x Furuno
Magnetic Compass	1 x Saura
AIS	1 x Furuno

---

**Safety equipment**

Search Lights	3 x 2000 W
Floodlights	4 x 1000 W (Sodium Halogen Type)
Liferafts	6 x 25 men Solas Type
Lifebuoys	8 pcs with buoy lights
Life jackets	63 pcs
Immersion Suit	3 pcs
Rescue boat	1 x 6 men rigid c/w 25 hp motor and david launching
Air Breathing App.	4 Sets
Parachute Distress	12 Units, SOLAS Type
Emergency Escape Breathing Devices	6 x Emergency Escape + One (1) of training EEBD

---

**Internal**

Fixed System in E/R	CO2 system in engine room
Fire Detection System	All living space and Engine Room System

---

**Other**

Rescue Zone	Port & Stbd Main deck
Water Maker	1 x 5 MT/ day

---

# Tank Capacity

FRESH WATER TANKS (S.G.=1.000)						
Tank Name	Location	Capacity (M <sup>3</sup> )	Weight (T)	LCG (M)	KG (M)	Max FSM (MT-m)
NO.1 F.W.WING TK. (P)	76-80	18.37	18.37	46.742F	3.737	4.28
NO.1 F.W.WING TK. (S)	76-83	27.15	27.15	47.413F	3.826	7.71
NO.2 F.W.DB. TK. (C)	63-76	81.77	81.77	42.158F	0.866	470.34
NO.2 F.W.WING TK. (P)	63-76	73.11	73.11	42.003F	3.496	19.12
NO.2 F.W.WING TK. (S)	63-76	73.11	73.11	42.003F	3.496	19.12
<b>FRESH WATER TOTAL</b>		<b>273.51</b>	<b>273.51</b>			

FUEL OIL TANKS (S.G.=0.850) (HEAT EXPANSION MARGIN=2%)						
Tank Name	Location	Capacity (M <sup>3</sup> )	Weight (T)	LCG (M)	KG (M)	Max FSM (MT-m)
F.O.DAY TK. (P)	38-42	12.76	10.63	24.000F	3.750	0.62
F.O.DAY TK. (S)	38-42	12.76	10.63	24.000F	3.750	0.62
NO.1 F.O. WING TK. (S)	42-62	75.00	62.48	30.134F	2.943	2.70
NO.1 F.O. DB. TK. (P)	51-62	38.79	32.31	33.883F	0.635	87.10
NO.1 F.O. DB. TK. (S)	51-62	38.79	32.31	33.883F	0.635	87.10
NO.2 F.O. DB. TK. (P)	37-51	54.71	45.57	26.362F	0.682	107.64
NO.2 F.O. DB. TK. (S)	37-51	54.71	45.57	26.362F	0.682	107.64
NO.2 F.O. WING TK. (P)	6-22	61.88	51.55	9.107F	3.424	10.31
NO.2 F.O. WING TK. (S)	6-22	61.88	51.55	9.107F	3.424	10.31
NO.3 F.O. DB. TK. (P)	22-37	50.13	41.76	18.410F	0.708	89.20
NO.3 F.O. DB. TK. (S)	22-37	50.13	41.76	18.410F	0.708	89.20
<b>FUEL OIL TOTAL</b>		<b>511.54</b>	<b>426.12</b>			

**DRILL WATER / WATER BALLAST TANKS (S.G.=1.025)**

Tank Name	Location	Capacity (M³)	Weight (T)	LCG (M)	KG (M)	Max FSM (MT-m)
FP. D.W. / W.B. TK.	83-FE	56.88	-	50.998F	3.278	48.87
D.W. / W.B. TK. (C)	6-22	57.37	-	8.435F	1.898	113.86
AFT. D.W. / W.B. AP. TK. (P)	AE-4	22.71	-	0.242A	4.871	24.67
AFT. D.W. / W.B. AP. TK. (S)	AE-4	22.71	-	0.242A	4.871	24.67
NO.1 D.W. WING TK. (P)	42-57	68.19	-	29.644F	2.994	2.33
NO.2 D.W. WING TK. (P)	24-38	65.56	-	18.893F	2.951	2.47
NO.2 D.W. WING TK. (S)	24-38	65.56	-	18.893F	2.951	2.47
<b>D.W. / W.B. TOTAL</b>		<b>358.98</b>				

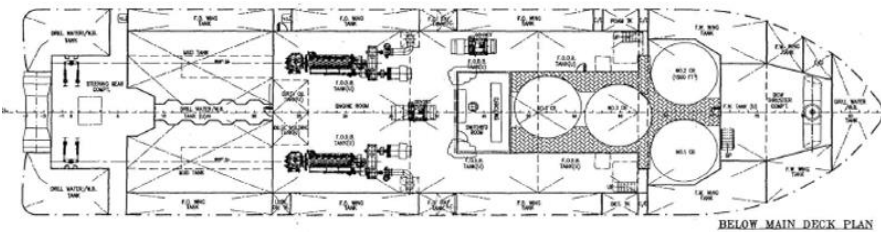
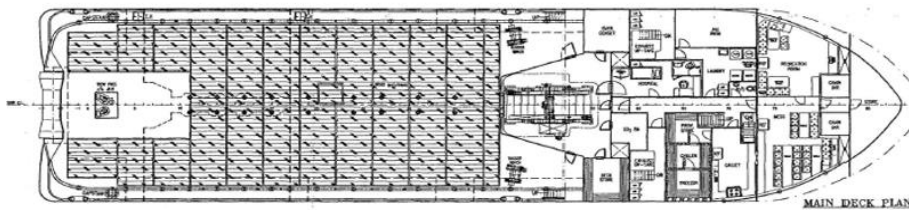
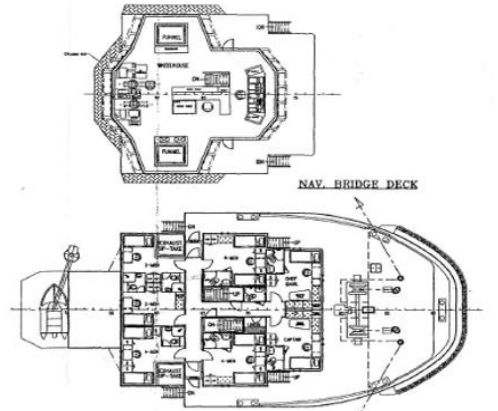
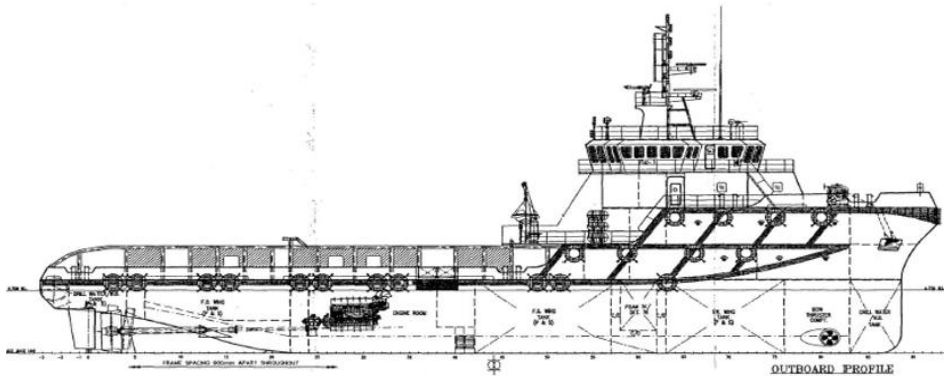
**MUD TANKS (S.G.= 2.500)**

Tank Name	Location	Capacity (M³)	Weight (T)	LCG (M)	KG (M)	Max FSM (MT-m)
MUD TK. (P)	6-22	127.80	319.50	9.137F	4.031	237.02
MUD TK. (S)	6-22	127.80	319.50	9.137F	4.031	237.02
<b>MUD TOTAL</b>		<b>255.60</b>	<b>639.00</b>			

**CEMENT TANKS (S.G.= 1.380)**

Tank Name	Location	Capacity (M³)	Weight (T)	LCG (M)	KG (M)	Max FSM (MT-m)
NO.1 CEMENT TK.	64-71	42.48	58.62	40.350F	3.250	-
NO.2 CEMENT TK.	64-71	42.48	58.62	40.350F	3.250	-
NO.3 CEMENT TK.	56-63	42.48	58.62	36.000F	3.250	-
NO.4 CEMENT TK.	48-55	42.48	58.62	31.200F	3.250	-
<b>CEMENT TOTAL</b>		<b>169.92</b>	<b>234.48</b>			

# GA SPECIFICATION



### PRINCIPAL DIMENSIONS

LENGTH OVERALL	58.70 M
LENGTH WATERLINE	56.37 M
LENGTH BETWEEN PERPENDICULARS	53.20 M
BREADTH MOULDED	14.60 M
DEPTH MOULDED	5.50 M
MAX. DRAFT MOULDED	4.75 M
ACCOMMODATION	50 MEN
FUEL OIL	700 M <sup>3</sup>
FRESH WATER	270 M <sup>3</sup>
WATER BALLAST/DRILL WATER	1180 M <sup>3</sup>
MUD (S.G. = 2.5)	250 M <sup>3</sup>
DRY BULK TANKS (4 x 1500 FT <sup>3</sup> = 6000 FT <sup>3</sup> )	120 M <sup>3</sup>
CLEAR DECK AREA (DECK LOADING = 7 T/M <sup>2</sup> )	340 M <sup>2</sup>
TOTAL POWER	2 x 2500 PS
SOLLARD FULL	65 TONNS
SPEED	13.5 KNOTS

1	AS PER NAVY'S DIMENSIONS	NAVAL	30-01-1
2	AS PER NAVY'S DIMENSIONS	NAVAL	30-01-2
3	AS PER NAVY'S DIMENSIONS	NAVAL	30-01-3
4	AS PER NAVY'S DIMENSIONS	NAVAL	30-01-4
5	AS PER NAVY'S DIMENSIONS	NAVAL	30-01-5
6	AS PER NAVY'S DIMENSIONS	NAVAL	30-01-6
7	AS PER NAVY'S DIMENSIONS	NAVAL	30-01-7
8	AS PER NAVY'S DIMENSIONS	NAVAL	30-01-8
9	AS PER NAVY'S DIMENSIONS	NAVAL	30-01-9
10	AS PER NAVY'S DIMENSIONS	NAVAL	30-01-10

SHIPBUILDING COMPANY

M.L.C. BARGING PTE. LTD.

NO. 01

58.7m MULTI-PURPOSE OFFSHORE SUPPLY VESSEL

GENERAL ARRANGEMENT

SCALE: 1:125

DATE: 8-7-06

BY: KCM/C484(B)-G1

NO. 8

THIS DOCUMENT AND THE INFORMATION CONTAINED HEREIN IS CONFIDENTIAL AND PROPRIETARY OF M.L.C. BARGING PTE. LTD. IT IS NOT TO BE COPIED, REPRODUCED, OR TRANSMITTED IN ANY FORM OR BY ANY MEANS, ELECTRONIC OR MECHANICAL, WITHOUT PERMISSION IN WRITING FROM M.L.C. BARGING PTE. LTD.